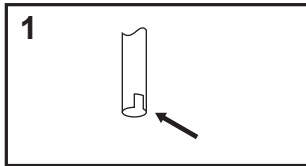
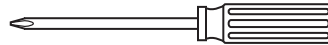


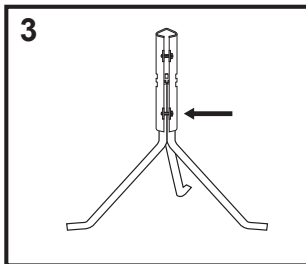


# ASSEMBLY INSTRUCTIONS FOR MODEL 89 BIRDBATH STAND

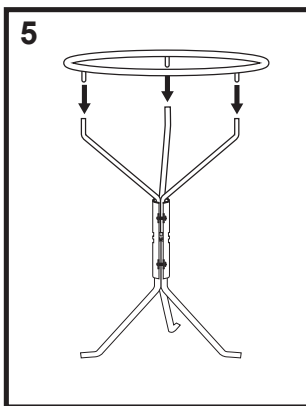
Tools needed: Phillips screwdriver



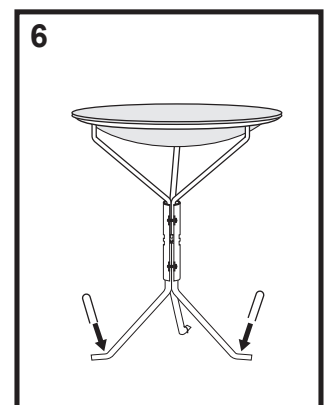
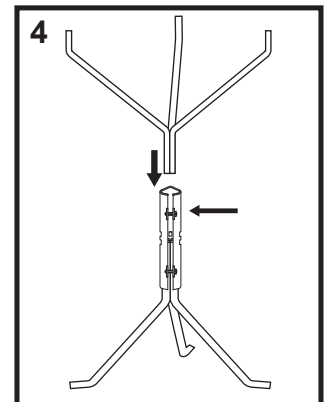
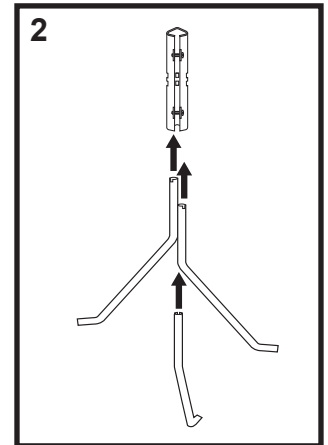
**Figure 1:** Locate the notch on the end of each arm/leg. The notch will line up with a tab inside the bracket.



**Figure 3:** Once the legs are in place, tighten the lower screw on the bracket.



**Figure 5:** Position the ring above the arms and slide the three posts into the open ends of the arms. The stand is now complete.



**Figure 6:** Use the U-shaped wires to stake the stand to the ground, then place the birdbath within the ring.